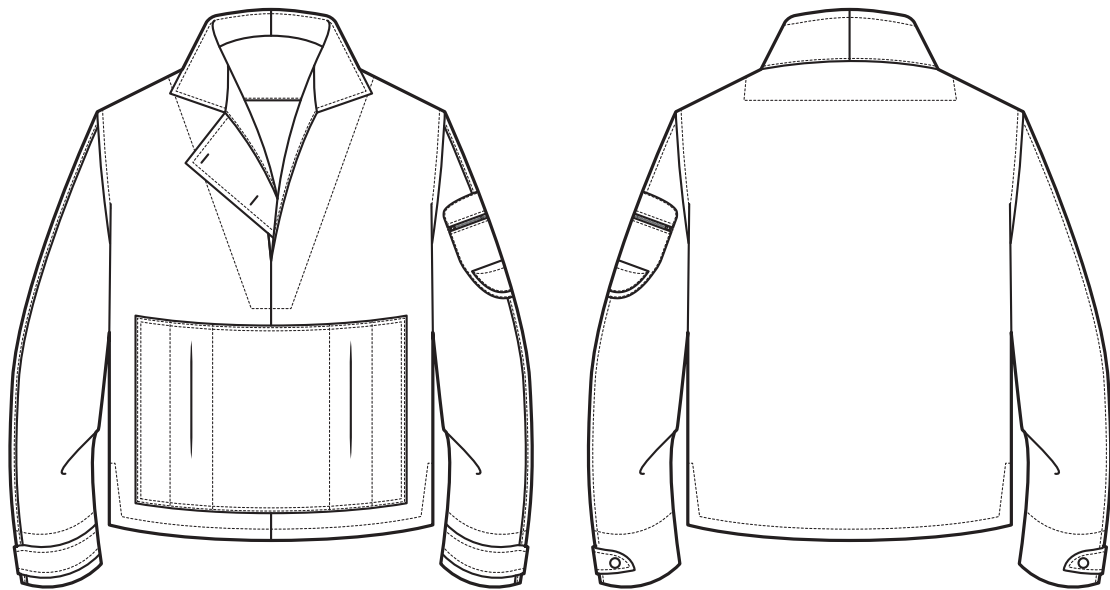


# 0% VAREUSE // GOOD TO KNOW



Ohé matelot !

**You got a Zero Waste pattern of man vareuse (sailor overhead jacket), congrats !**

This is complete garment fitted into en rectangle, it contributes to save our ressources by using all the fabric surface. I thought this garment as classical shirt with a classical look and a quite conventional shape. But it's important to understand that this special garment design method tends to create some different volumes and finishes of a conventional pattern.

**Suggested fabric types :** *heavy cotton canvas or light woolen fabric.*

**Sewing notions :** *14 cm zip for sleeve's pocket, 4 bottons or snaps for cuffs and collar tab.*

**Machines you need:** *sewing machine, serger (or zigzag stitch if you don't have serger)*

**Needed time:** 8 to 10 hours

## - Before start sewing -

We suggest you to prepare cardboard templates for sleeve pockets 1 (upper and bottom parts) & 2. They will help you to preform the curved seam allowance before patching pockets on sleeve. To obtain them you have to trace the same pattern as pocket's facing and final pocket without seam allowances.



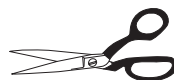
## - What these symbols mean ? -



Wrong side of fabric



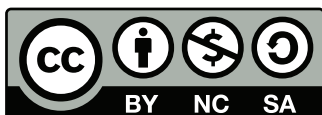
Right side of fabric



Cut



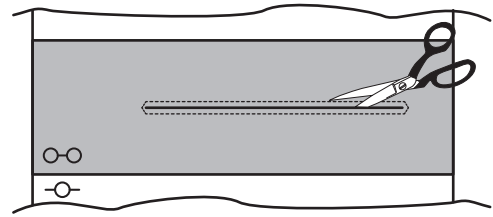
Press with iron



This work is licensed under the Creative Commons Attribution - Pas d'Utilisation Commerciale - Partage dans les Mêmes Conditions 4.0 International License. To view a copy of this license, visit <http://creativecommons.org/licenses/by-nc-sa/4.0/>.

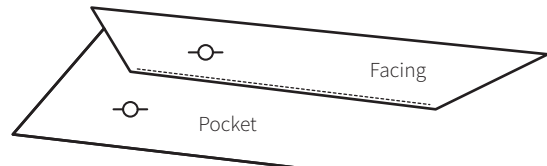
## FRONT POCKET

Start with preparing the front patched pocket: place facing following the lines.  
Stitch around the opening line. Then, cut the opening line.



Turn the facing in and make an understitching on facing paying attention to sew seam allowances with but not the pocket.

**This stitch helps the fabric to roll and make the facing more discreet on the outside.**



Patch facing on pocket.

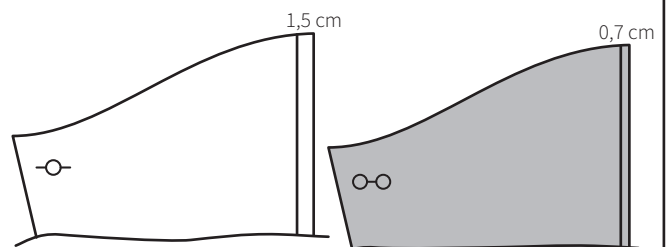
Fold and press pocket's seam allowances following values on pattern.

Baste pocket's placement lines on front panel before sewing it.

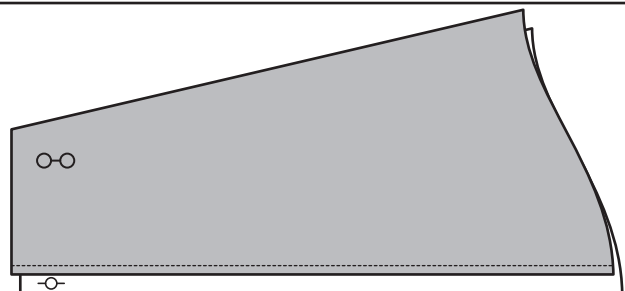
**This step will help you to place it regularly on the front panel.**

## MIDDLE SLEEVE FELLING SEAM

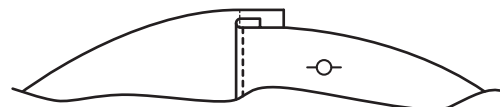
On back sleeve's right face: trace a line (with chalk or removable pencil) at 1,5cm (middle sleeve line).  
On front sleeve's wrong face: trace a line at 0,7cm.



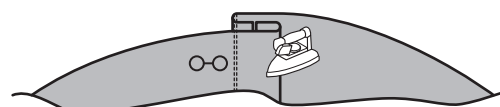
Align front sleeve's edge with line you traced on back sleeve right face.  
Stitch on the line you traced at 0,7 cm on front sleeve.



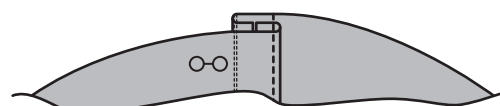
Fold and press the seam and make an edgestitching.



Fold and press back sleeve's seam allowance at 0,7 cm (edge to edge with front seam allowance).

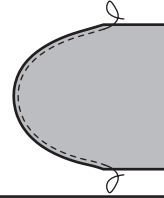


Pin and make an edgestitching.



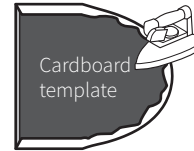
## SLEEVE'S POCKET

Tip to make the curves perfect:  
Baste a gathering thread on the curve of bottom pocket 1.



Pull on it to obtain the curve you want and fix it when the curve looks good.

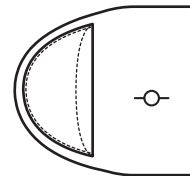
Slip the cardboard template inside and press with it to respect the shape.



Repeat the same process with the upper part of pocket 1.

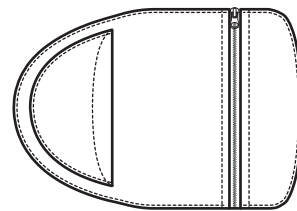
Repeat the same process with pocket 2 but pull a bit more on the gathering thread to make this pocket a little smaller than pocket 1.

Fold and sew top of pocket 2 and then sew it on pocket 1.



Sew the zip on pocket 1.

Patch the whole pocket on the sleeve you want.



Final look

## COLLAR TAB & FACING

Baste facing placement lines on front and back panels.  
**This step will help you to sew facing regularly on the front and back panel later.**

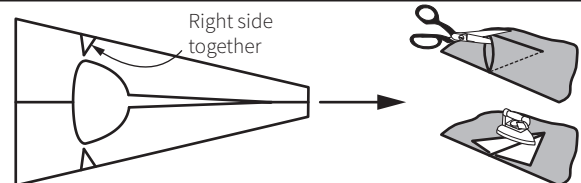
Sew front and back on shoulder seams. Open the seam allowances and press.

Fold and press facing seam allowances.

Sew the back of facing and the front from bottom to «J» point.

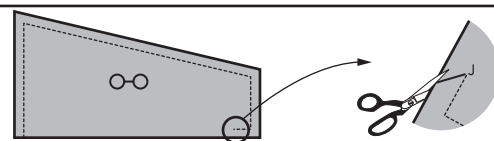


Close facing's darts right sides together. Cut the dart's value on middle, open & press it.



Sew collar tab right sides together.

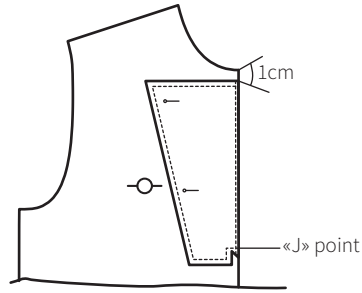
Pink at 45° on the down part before turning out the collar tab.



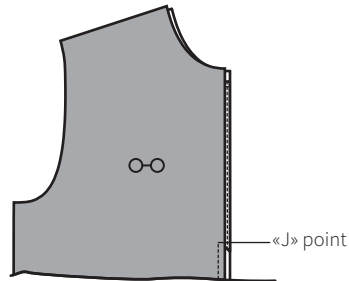
Topstitch it at 0,5 or 0,7 cm and stitch the raw edge at 0,5 cm.

If you planned a closing system like buttons, you better to trace buttonholes and button's placement now.

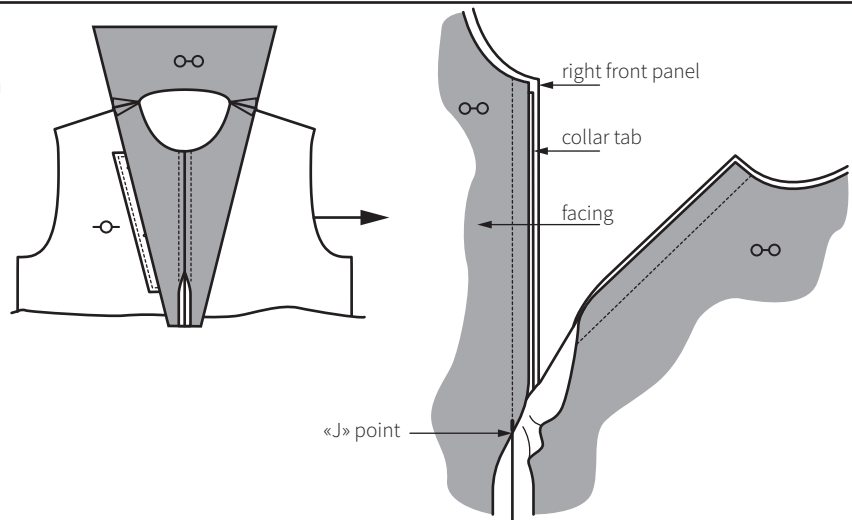
Sew the collar tab on right front panel at 0,7 cm from edge.



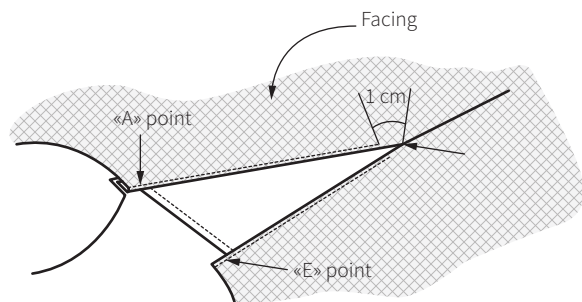
Sew both front panels right side together from bottom to «J» point. Pay attention not to stitch the collar tab, you must stop just below it.



Superimpose facing on front panel. Sew the two sides of front opening at 1cm from edge from neck to «J» point.



Before pressing the front opening, make an undestitching from A to 1 cm of J and a seconde from 1cm from J to E (like you made on pocket's facing).  
**This stitch helps the fabric to roll and make the facing more discreet on the outside.**



Press the front opening to make it clean.

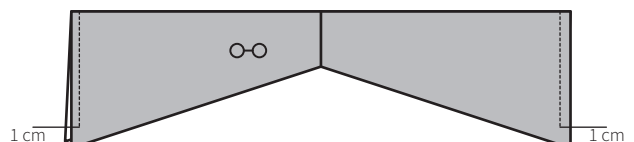
Pin facing following placement lines on front and back panel. Then sew it with an edgestitching.

## COLLAR

Sew middle back line.

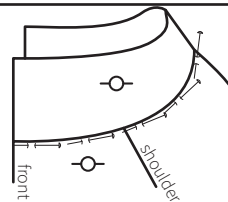
Fold and press the seam allowance of the inside part of collar.

Sew collar points leaving 1cm unstitched at the bottom.

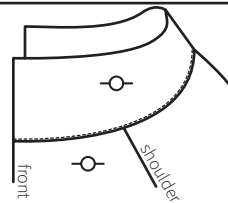


Sew the outside collar part on neck following ABCDE.

Pin or baste the inside collar just under the outside seam.



Then, make an edgestitching on the outside collar.  
Now you can topstitch collar at 0,5 or 0,7 cm, up to you.  
**If this technique looks too difficult or if the fabric is too thick, you better to sew it by hand.**



## SLEEVE, CUFF TABS & FACING

Sew sleeves on body respecting landmarks FGH.

Make a topstitching at 0,5 or 0,7 cm if you want.

Sew cuff tabs right sides together respecting the seam allowances on pattern.

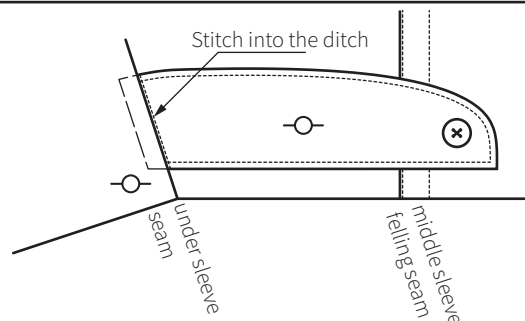
Turn out and press, topstitch if you want.

Place them on under sleeve seam between the two landmarks and stitch them at 0,5 cm from sleeve's edge.

Sew from cuff to H to I point. open seam allowances and press.

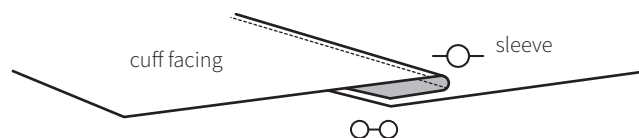
Stitch into the ditch\* on right side to fix cuff tabs on sleeve. It will stay the cuff tab in the right direction.

*\*: hand or machine stitch discreetly made in the ditch.*

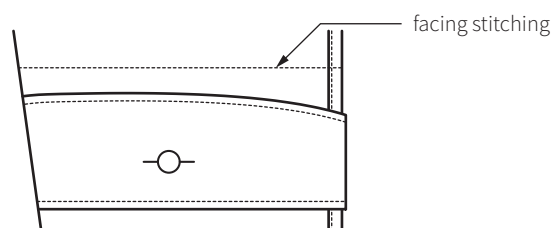


Assemble two pieces of left cuff facing and stitch the facings on sleeves.

Make an understitching paying attention to stitch only facing and seam allowances.  
**This stitch helps the fabric to roll and make the facing more discreet on the outside.**

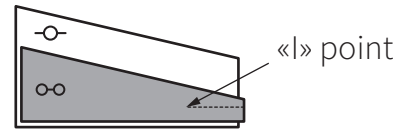


Sew the facing edge to sleeve to close facing.



# SIDE VENTS & HEM

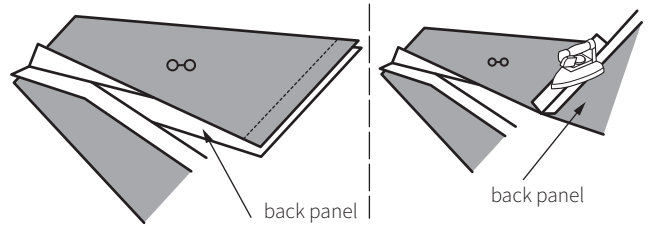
Sew right & left pieces of vents right side together from top to I point.



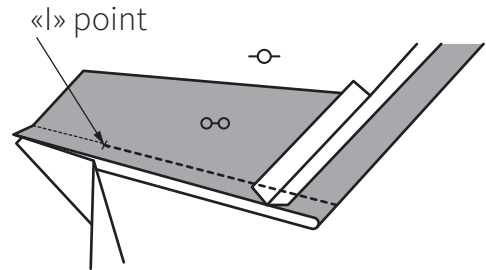
Baste the final hem line with long stitches, then fold and press.

Fold and press seam allowances of hem at 1 cm from edge.

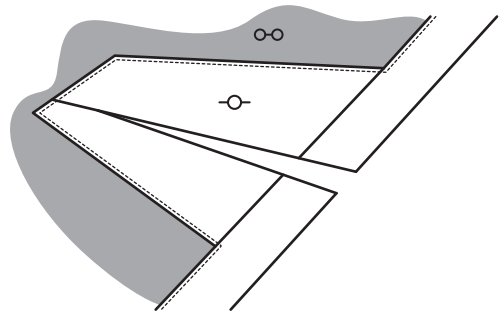
Sew bottom part of vent pieces on the hem's values. Then, open and press the seam.



Turn and sew the vent's edges right side together from hem's edge to I point. Make this for vent's both sides.



Finally patch the vents' pieces on garment and sew the hem and vent.



Finally, apply the closing system (button+buttonholes or snaps).  
For the front opening, If you chose buttons, I suggest you to sew them inside garment on the facing layer only not to create a dot visible outside. Then, buttonholes are made on collar tab.

Hissez oh !

**I hope you enjoyed this moment we spent together, now enjoy your creation !**