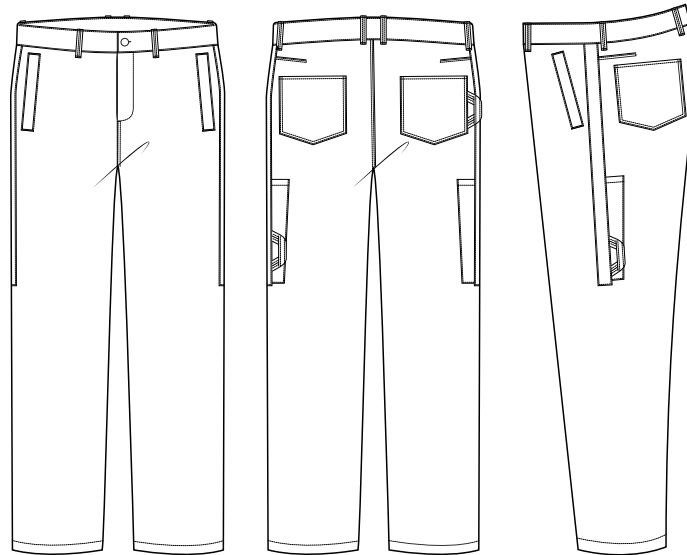


0% CARPENTER // GOOD TO KNOW



Hi workwear lover !

You got a Zero Waste pattern of man carpenter trousers, congrats !

This is complete garment fitted into en rectangle, it contributes to save our ressources by using all the fabric surface. I designed this garment as a **regular fit workwear** trousers with a quite conventional shape. Then, it will look really nice with a 100% cotton fabric. But it's important to understand that this special garment design method tends to create some different volumes and finishes of a conventional pattern.

Suggested fabric types : denim, twill or ripstop fabric for the main fabric and poplin fabric for the pocket bag.

Sewing notions : 1 shank buttons 17mm for the belt, 40 cm bias for fly finishing (5mm wide finished, zip for fly: 28 = 14cm, 30 = 14,5 cm, 32 = 15 cm, 34 = 15,5 cm, 36 = 16 cm.

If you don't cut at the pleat: cotton herringbone tape 10mm width to join back pockets together.

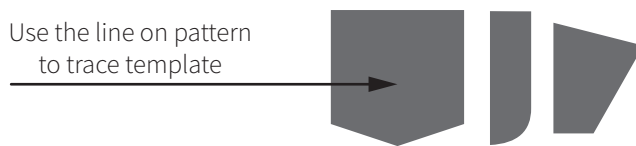
Machines you need: sewing machine, serger (or zigzag stitch if you don't have serger)

Needed time: 8 to 10 hours

- Before start sewing -

I suggest you to prepare cardboard template for back, coin pockets and fly topstitching (refer to PDF attached file).

Use the line on pattern
to trace template



- What these symbols mean ? -



Wrong side of fabric



Right side of fabric



Cut



Press with iron

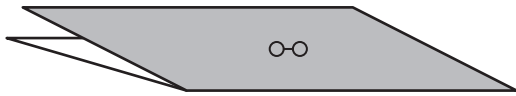


This work is licensed under the Creative Commons Attribution - Pas d'Utilisation Commerciale - Partage dans les Mêmes Conditions 4.0 International License. To view a copy of this license, visit

<http://creativecommons.org/licenses/by-nc-sa/4.0/>.

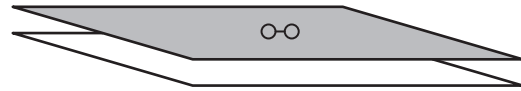
BEFORE

The pattern you're about working with is a half. Next steps depend on what kind of fabric you chose:



CASE 1

You chose a classical fabric like 135 or 150 cm width: you have to pleat following straight grain. Then you lay the pattern, you pin and cut (don't cut the middle of back pockets).

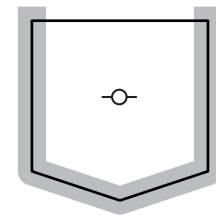
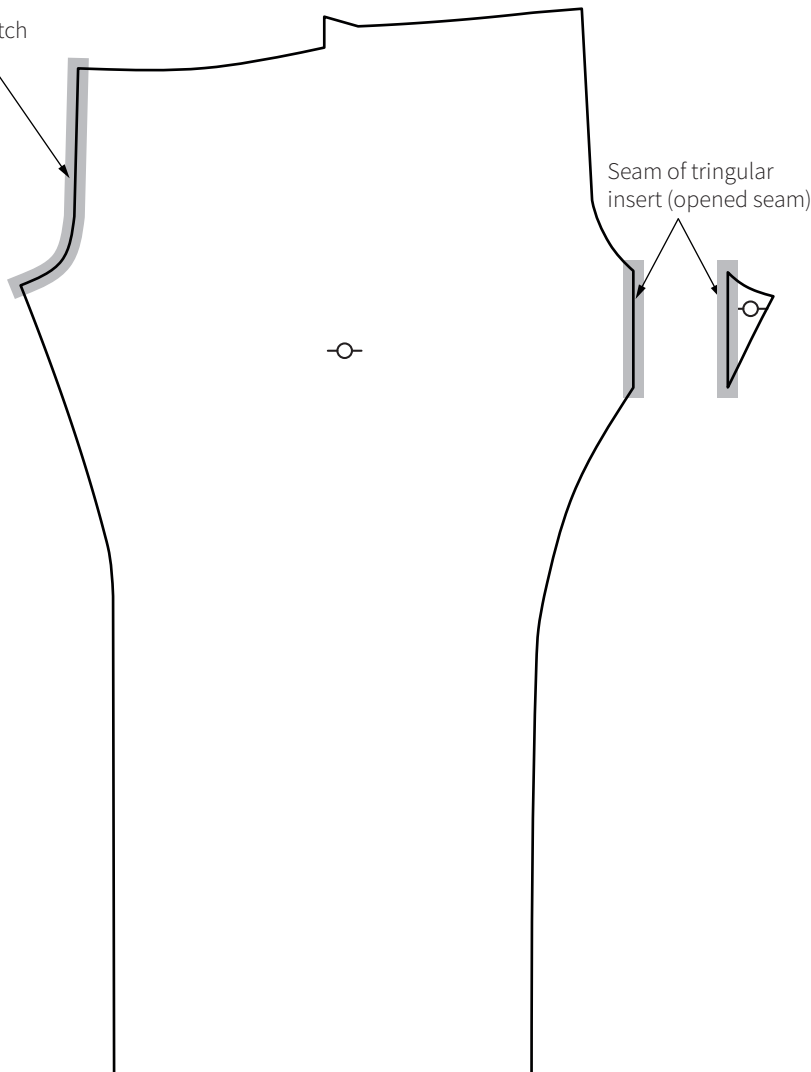


CASE 2

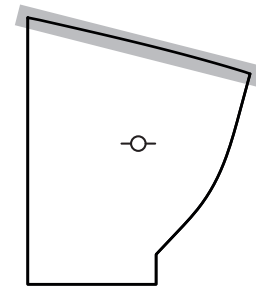
You chose a fabric like japanese selvedge, which are often about 70 or 90 cm width: you have to lay two layers of fabric aligned with the selvedge.

TO SERGE BEFORE SEWING

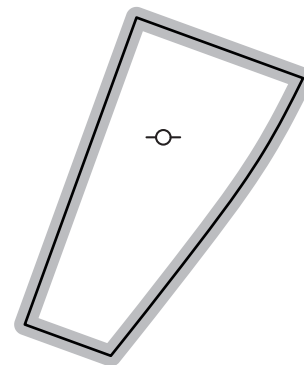
Front crotch



Back pockets



Top of coin pockets

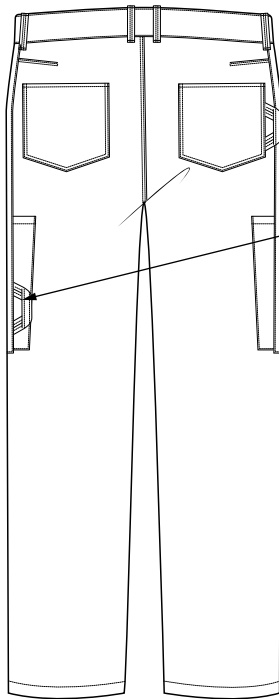


Single piped pocket facing

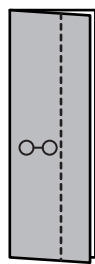
MARKS & NOTCHES

The best advice I could give you is to trace all the placement marks (belt loops, pockets, side band, pocket bag, etc.) either with chalk pencil, magic pen or by handstitch.
Go through all pieces to trace all marks and pink all notches. Yes, it looks like time wasting now but it will serve later, trust me.

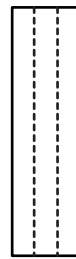
HAMMER LOOPS



You cut two hammer loops, you now have to decide where you want to place them. In this example, I placed the first on right back pocket and the second at the left knee's tool pkt.



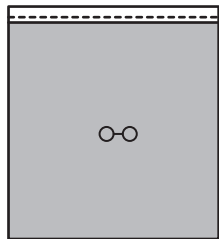
Fold righth side together and sew at 7mm



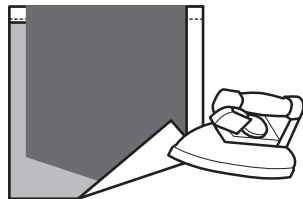
Turn inside out and topstitch twice if you want.

BACK POCKETS

CASE 1

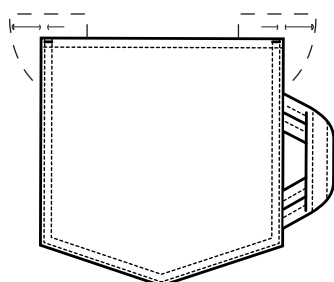


1/ Make top hem at 1 cm



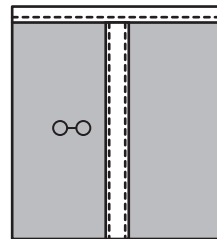
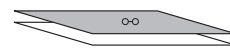
2/ Use cardboard to preform the pocket and press

3/ Pin the back pocket's reinforcement inside denim. The aim is to sew them under pocket's top corners.

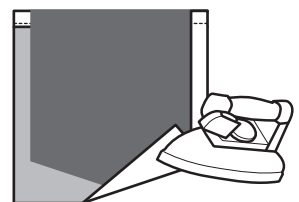


4/ Place hammer loop and patch back pockets (you can add bartack on top corners)

CASE 2

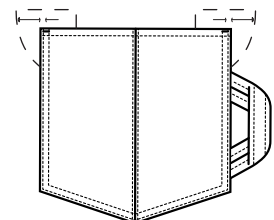


1/ Join two half pockets together thanks to the herringbone tape & make top hem at 1 cm



2/ Use cardboard to preform the pocket and press

3/ Pin the back pocket's reinforcement inside denim. The aim is to sew them under pocket's top corners.

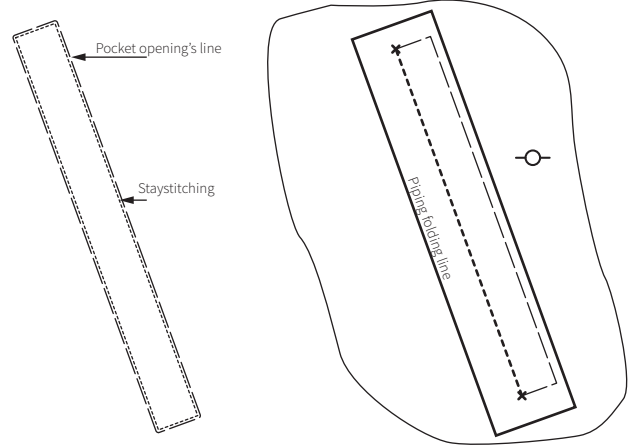


4/ Place hammer loop and patch back pockets (you can add bartack on top corners)

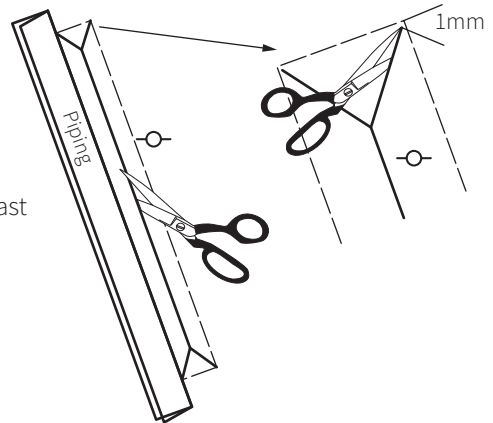
SINGLE PIPED POCKETS

First, Make a staystitching 1 mm inside pocket opening's line. It will help you to work precisely in the next steps.

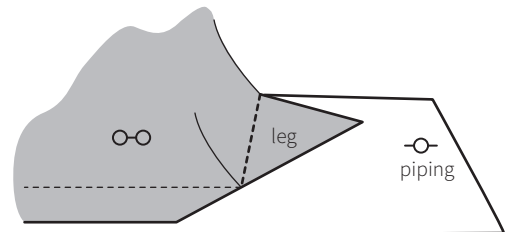
Fold the piping following the line on pattern. Trace the sewing line on piping, it will help you to place it correctly on the leg's marks. Sew it on the leg.



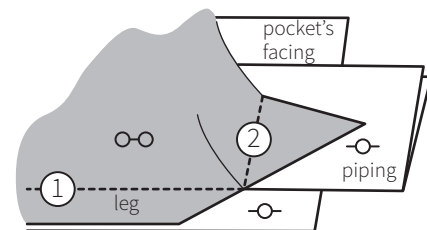
Cut pocket's opening. I suggest you not to cut the angles totally. It would be better to cut the last millimeter when you will sew the pocket corners.



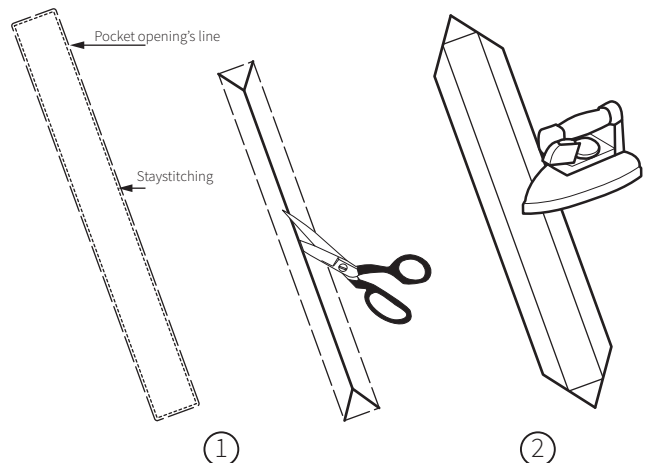
Sew the pocket's corners onto the piping to secure the angles.



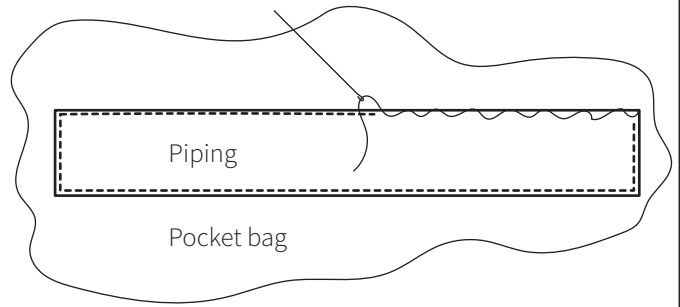
- 1) Turn piping inside garment and sew the wing that lefts.
- 2) Sew the corners along the same seam you did before.



- 1) Make a staystitching at 1 mm of sewing line. Cut pocket's opening on pocket's bag.
- 2) Fold the opening wings and press with iron to flatten them.



Sew the pocket bag along the stitch lines by a hand stitch.

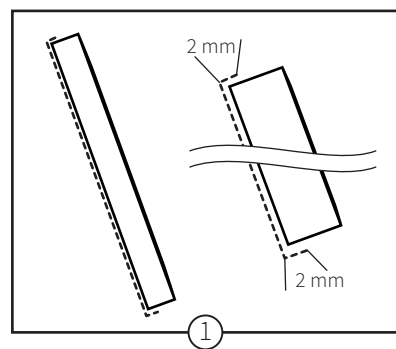
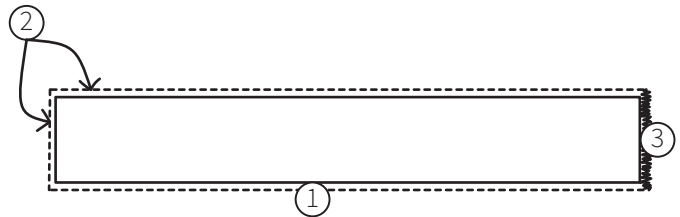


1) Topstitch the opposite side of the opening without sewing the pocket's facing.

For a better result: start and stop the topstitching at 2 mm on sides without back tack.

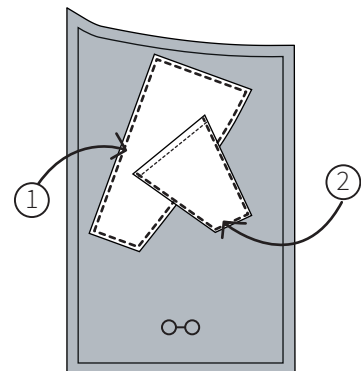
2) Topstitch the sides and the top of the pocket.

3) Make bartack with zigzag stitch.

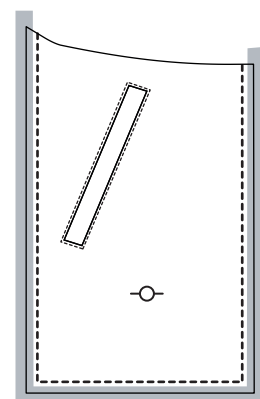


1) Sew the pocket's facing onto pocket bag along the marks you traced.

2) Press the coin pocket thanks to template and sew it above the pocket facing and the pocket bag.



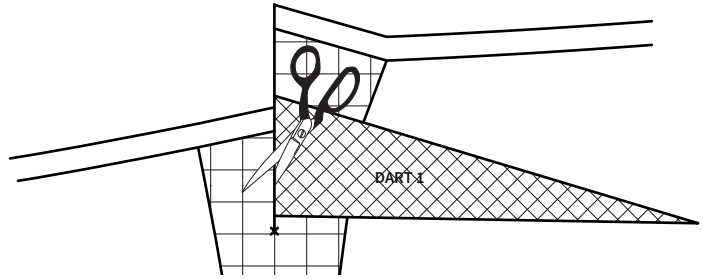
Sew the two sides of the pocket bag wrong side together. Then, serge the two edges together.



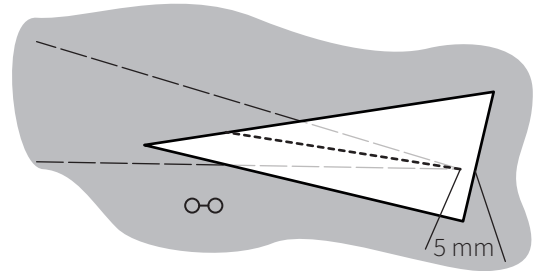
YOU DESERVE A BREAK NOW

SIDE DARTS

Cut the line until the cross mark.

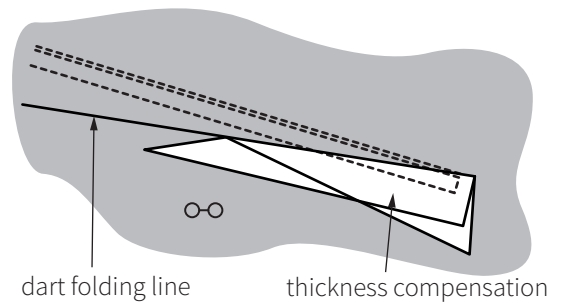


Place the thickness compensation piece at 5 mm from tip of the dart 1.
Sew it following the middle axis of the dart.
Fold following middle axis of the dart and press with iron.

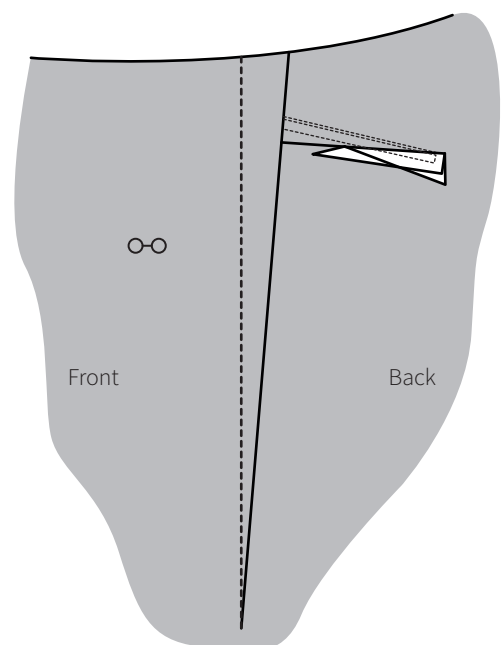


Sew the dart right side together.
Press with iron and lay the dart towards bottom of garment.
Make one or two topstitchings.

Thanks to thickness compensation, the topstitching looks better and regular.



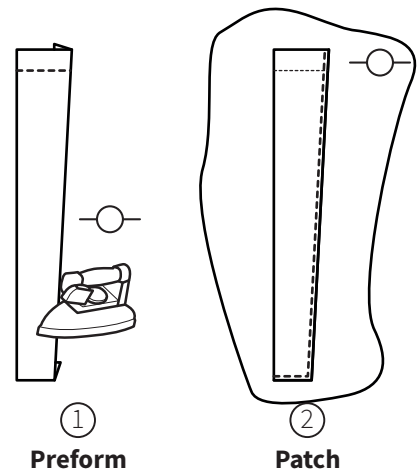
Sew the dart 2 following the marks you traced.
Lay the dart towards the back and press with iron.



TOOL POCKET

Preform tool pockets and press with iron.

Then, patch them on the legs following the marks you traced at the beginning.



Now is the best moment for a first fitting to check if your denim suits you.
Tight or loose? You can adjust thanks to the side dart.

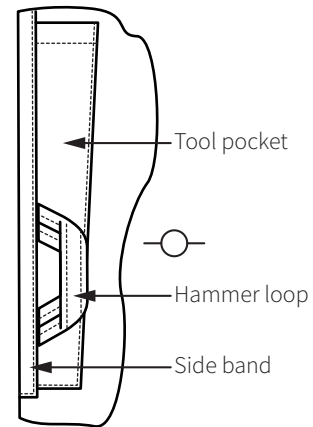
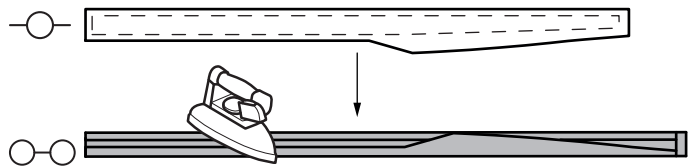
But keep in mind that the measure you change on body, the same you must change on the belt. This is why I suggest you not to loosen or tighten more than 2 cm on the total length (1cm per side). This is due to the fact you have to deal with the belt's seam allowance.

SIDE BAND

Preform the side band in a straight band as regular as possible. Press with iron.

Patch it centred with the side dart (move the side dart value not to sew it with the band. It must remain free).

Do not forget the second hammer loop to sew with the side band as shown on the sketch.

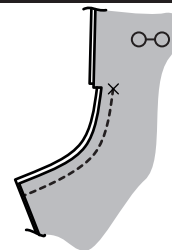


Sew the pocket's bag to the belt line. It is supposed to cover the beginning of the side dart to make it more discreet.

THE FLY

Check you traced the buttonholes and buttons placements on the right side of pieces of the fly.

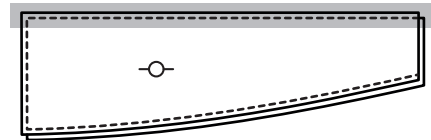
Sew the front crotch from the cross mark on front crotch right side together.



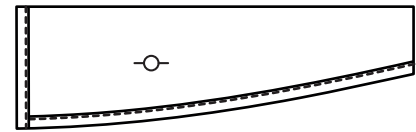
RIGHT FRONT FLY TAB

Sew both pieces wrong side together at 5 mm from edge.
Serge the straight side.

Check you traced the buttons placement on right side of the fabric.



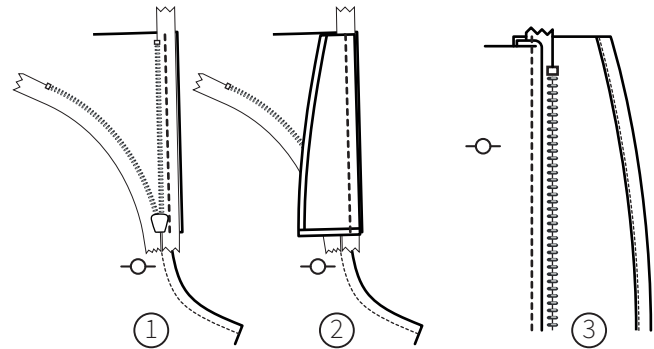
Sew the 5 mm bias on curved side and the bottom of the piece.



Sew the zip onto right panel at 1 cm from edge.

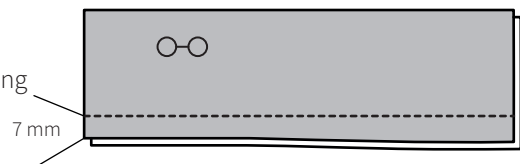
Then, sew right fly above it and lay seam allowances towards leg panel and press with iron.

Finally, make an edge topstitching.



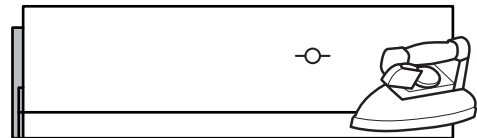
LEFT FRONT FLY TAB

Sew the slightly curved side in straight line at 7mm from edge, strating at the shortest side.

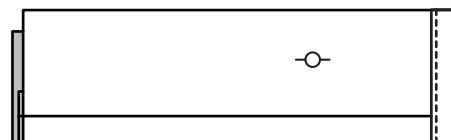


Press as shown: open the seam and fold following the seam allowance's edge, keeping the line as straight as possible.

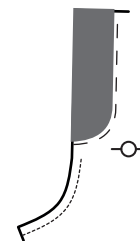
Now you can make the buttonholes and open them.



Sew the 5 mm bias on the bottom part of the left fly.



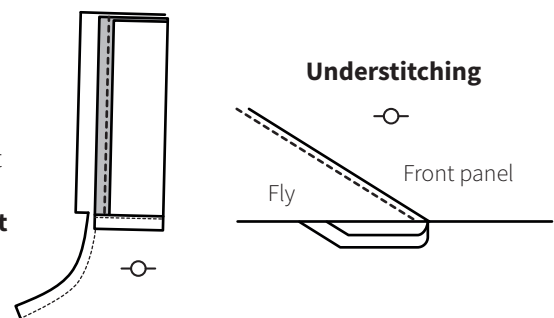
Thanks to the fly topstitching's cardboard template, trace temporarily the front topstitching on the front left panel.



Sew left fly onto left front panel at 1,5 cm from edge.

Lay seam allowances towards the fly and make an understitching paying attention to sew seam allowances with the fly but not the front panel.

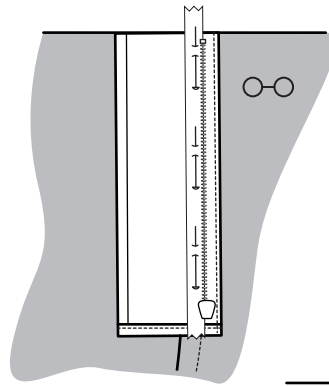
This stitch helps the fabric to roll and make the fly more discreet on the outside.



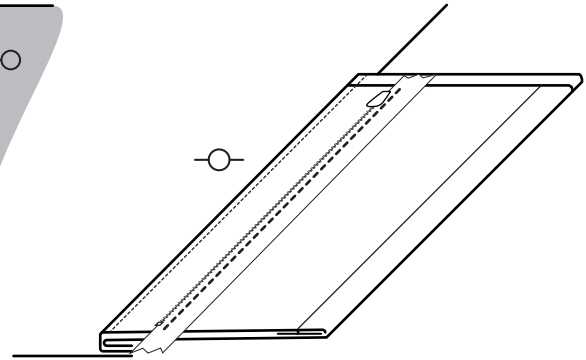
Fasten the zip and place it correctly onto the left fly tab, then pin it.

Open the zip and sew it on left fly tab.

Take your time on zip's placing because this is the key step make it right. Baste it if needed.



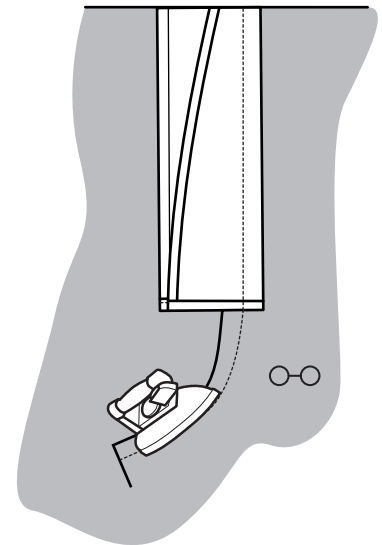
①



①

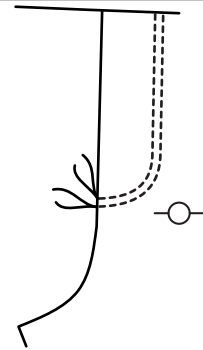
FRONT CROTCH

Lay the seam right leg panel towards left leg panel. Then, press with iron.



Make one or two topstitchings following the trace.

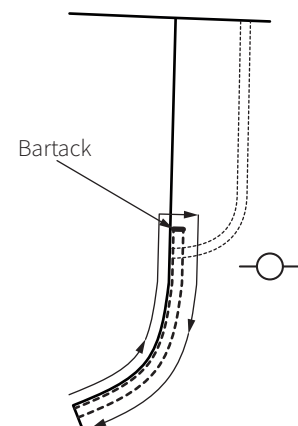
Only the left fly tab must be sewn with the left panel while this step.



Roll the threads lasting from the topstitchings on themselves and put them in the fly.

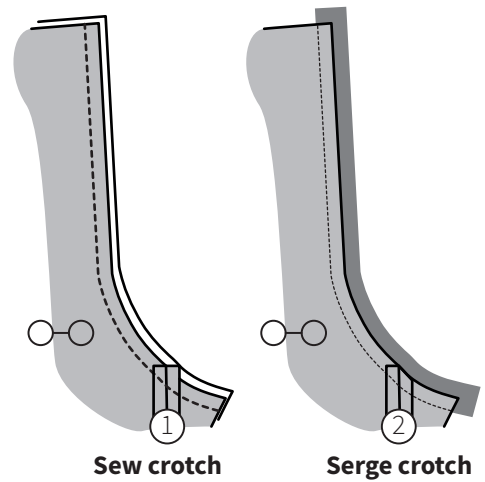
Then, make the crotch topstitching following the arrow.

Finally add a bartack with zigzag stitch if you want.

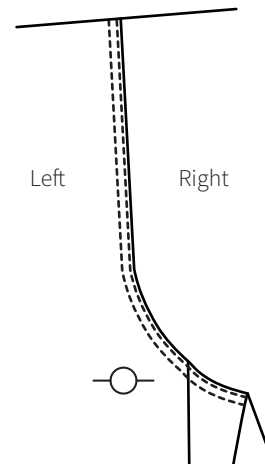


BACK CROTCH

Sew back crotch of both legs right side together.
Serge the seam allowance both layer together.



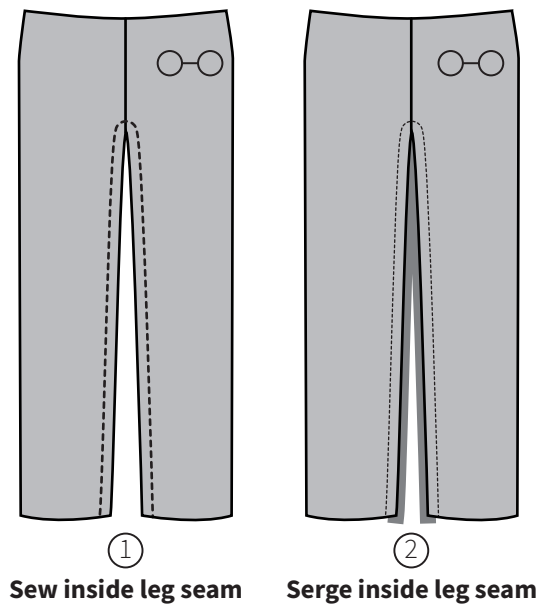
Lay seam allowance on left panel, then press with iron.
Topstitch once or twice.



INSIDE LEG SEAM

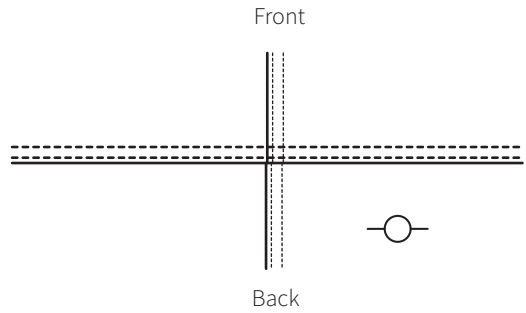
Sew inside leg seam, right side together.
Serge it all layer together.

TIP: cross of all seams at the crotch may be really thick on 1cm of length. I suggest you to trim a little some layers after the inside seam sewing step to reduce the thickness. It may helps to serge inside leg seam and to topstitch at the next step. It also avoids a needle breaking. But pay attention not to trim too much, the seam could tears.



Finally you can topstitch once or twice the inside leg seam.

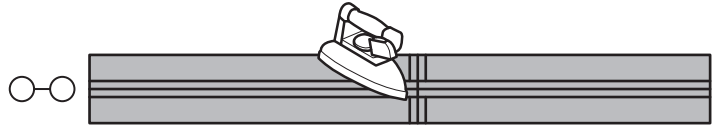
It may be a little challenging due to the fact you have to work inside a tube, but it is going to be fine.



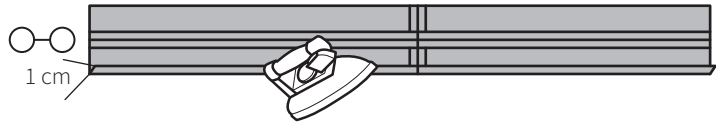
BELT

Sew the two parts of the belt together by joining «J» mark.

Then, sew both parts of belt: inside and outside parts.



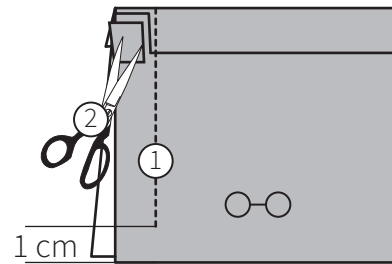
Choose which part will be the inside part and press 1 cm seam allowance.



Fold the belt following the seam and open the seam.

Sew the two sides keeping 1 cm free.

In order to deal better with the thickness, you can trim a little the seam allowance in the corner.



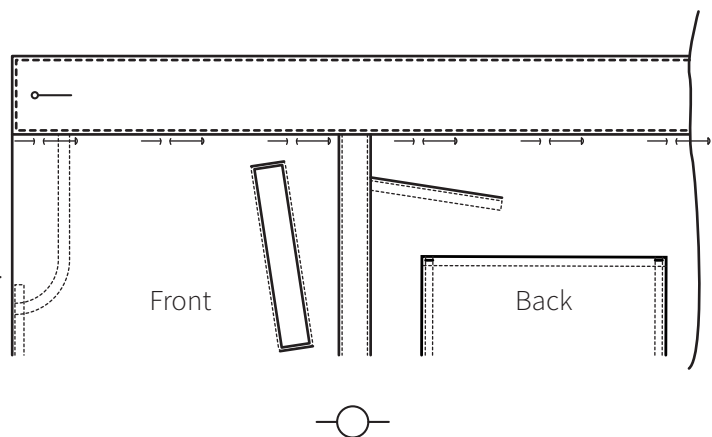
Sew the outside part of the belt onto the trousers following marks «FGHIHG».

Then, press with iron and lay seam allowance inside belt.

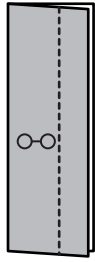
Pin the inside belt into the ditch.

Topstitch the belt all around at 1 mm.

Make the buttonhole following the marks on pattern.

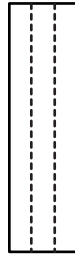


BELT LOOPS



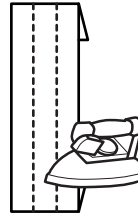
①

Fold right side together and sew at 5 mm. It is supposed to be about 1 cm width.



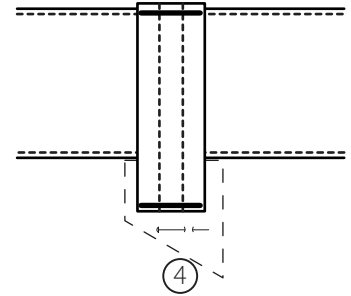
②

Turn inside out and topstitch twice if you want.



③

Fold each side at 1 cm and press.



④

Sew them according to the marks. If you adjusted the waist, you have to readjust the belt loops placement as well. If your machine is strong enough, you can add bartack on belt loops. Pin the reinforcement pieces under the two back belt loops.

LAST OPERATIONS

Put the shank buttons according to the marks.

Adjust the bottom hems to the right length and sew them.

Do you want a more workwear look for your Carpenter? Add metal rivets at back pockets corners.

You got it !

I hope you enjoyed this moment we spent together, now enjoy your creation !